



# UNIVERSITY AT ALBANY

State University of New York

FOUNDED 1844



ONE OF THE  
"TOP UNIVERSITIES  
IN THE WORLD"  
*QS, 2017*



ONE OF THE  
"BEST BUSINESS  
SCHOOLS"  
*Princeton Review*



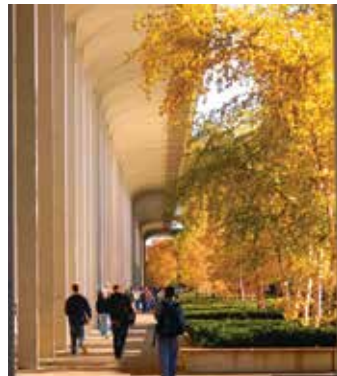
ONE OF THE  
"BEST UNIVERSITIES  
IN THE U.S."  
*U.S. News & World Report,  
2017*



ONE OF  
"AMERICA'S  
TOP COLLEGES"  
*Forbes Magazine*



TOP 5% FOR BEST VALUE  
IN THE USA FOR  
INTERNATIONAL  
STUDENTS  
*Collegefactual.com, 2017*



## UNIVERSITY AT ALBANY OFFICE OF INTERNATIONAL ADMISSIONS AND RECRUITMENT

Science Library G40  
1400 Washington Ave.

PH: +1 (518) 591-8172

FAX: +1 (518) 591-8171

[uginternational@albany.edu](mailto:uginternational@albany.edu)


[albany.edu/  
international-admissions](http://albany.edu/international-admissions)

THE UNIVERSITY AT ALBANY OFFERS A WORLD OF OPPORTUNITY TO OVER 17,300 STUDENTS, INCLUDING 1,800 INTERNATIONAL STUDENTS FROM MORE THAN 100 COUNTRIES.



## ANNUAL ESTIMATED COSTS 2017-18


### UNDERGRADUATE

 \$26,045  
Tuition/Fees

 \$13,464  
Living Expenses

**Total: \$39,509**

### GRADUATE

 \$25,747\*  
Tuition/Fees

 \$10,700  
Living Expenses

**Total: \$36,447**

*\*MBA: \$27,927*

Undergraduate students can receive up to

**\$5,000**

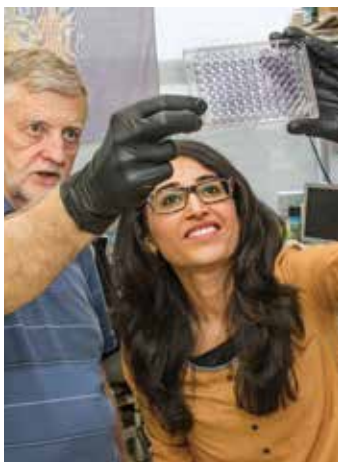


per year in scholarships for all 4 years of study



## OUR ALUMNI

have found successful careers with companies such as **GOLDMAN SACHS, DISNEY, GE, IBM, MICROSOFT, BLOOMBERG, SAMSUNG, APPLE, MORGAN STANLEY, LOCKHEED MARTIN, DELOITTE,** and more



## REQUIREMENTS FOR UNDERGRADUATE ADMISSION

- A **GRADE POINT AVERAGE** of **85%** (3.0) is recommended for **FRESHMEN APPLICANTS**.
- B average or **2.5 GPA TO TRANSFER** for most programs
- **SAT SCORES** are **STRONGLY ENCOURAGED** for scholarship consideration
- Fulfill **ENGLISH PROFICIENCY** requirement
- **OFFICIAL TRANSCRIPT(S)**
- **FINANCIAL INFORMATION** as requested



## ENGLISH PROFICIENCY REQUIREMENT

One of the following:

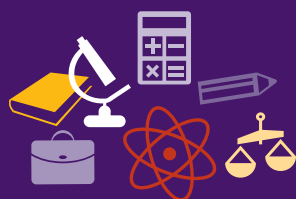
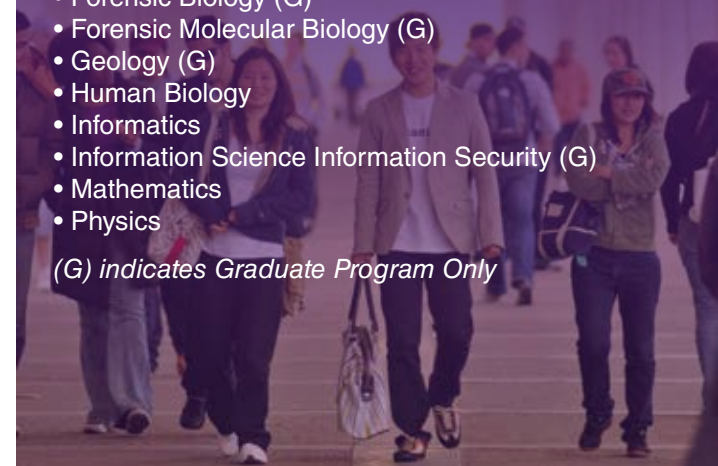
- TOEFL 70 ibt / 193 cbt / 523 pbt
- IELTS 6.0
- SAT 400 critical reading with reading sub score of 22
- Completion of UAlbany IELP program
- PTE 55
- ELS 112

## STEM 36-MONTH WORK PERMIT

UAlbany STEM graduates are eligible to apply for up to 36 months of OPT work permits in the fields listed below:

- Actuarial and Mathematical Sciences
- Applied Chemistry (G)
- Atmospheric Science
- Behavioral Neuroscience (G)
- Biochemistry & Molecular Biology
- Biodiversity, Conservation & Policy (G)
- Biology
- Biomedical Science (G)
- Biometry & Statistics (G)
- Chemistry
- Cognitive Psych (G)
- Comp Science & Applied Math
- Computer Engineering
- Computer Science
- Digital Forensics
- Educational Research (G)
- Environmental Science
- Environmental Health Science (G)
- Epidemiology (G)
- Financial Market Regulation
- Forensic Biology (G)
- Forensic Molecular Biology (G)
- Geology (G)
- Human Biology
- Informatics
- Information Science Information Security (G)
- Mathematics
- Physics

*(G) indicates Graduate Program Only*



We offer **30+** **ACCELERATED** bachelor's/master's programs in 5 years



# UNDERGRADUATE DEGREE PROGRAMS

- Accounting (BS)  
Actuarial & Mathematical Sciences (BS)  
Africana Studies (BA)  
Anthropology (BA)  
Art (BA)  
Art History (BA)  
Atmospheric Science (BS)  
Biology (BA & BS)  
Biochemistry & Molecular Biology (BS)\*  
Bio-Instrumentation (BS)\*  
Business Administration (BS)  
    *Concentrations in:*  
    Entrepreneurship  
    Financial Analyst Honors Program  
    Information Technology Management (ITM)  
    Management (combined concentrations only)  
    Marketing  
Chemistry (BA & BS)  
    *BS Concentrations in:*  
    Chemistry Emphasis  
    Chemical Biology Emphasis  
    Forensic Chemistry Emphasis  
Chinese Studies (BA)  
Communication & Rhetoric (BA)  
Computer Engineering (BS)  
Computer Science (BA & BS)  
Computer Science & Applied Mathematics (BS)  
Criminal Justice (BA)  
Digital Forensics (BS)  
Documentary Studies (BA)\*  
East Asian Studies (BA)  
Economics (BA & BS)  
Emergency Preparedness, Homeland Security & Cybersecurity (BA)  
English (BA)  
Environmental Science (BS)\*  
    *Concentrations in:*  
    Ecosystems Specialization  
    Climate Change Specialization  
    Geography Specialization  
    Sustainability Science and Policy Specialization  
Financial Market Regulation (BS)\*  
Geography (BA)  
Globalization Studies (BA)\*  
History (BA)  
    *Concentrations in:*  
    United States  
    Europe  
    World  
Human Biology (BS)  
Human Development (BS)  
Informatics (BS)  
    *Concentrations in:*  
    Interactive User Experience  
    Cybersecurity  
    Social Media  
    Data Analytics  
    Software Development  
    Information Technology (offered fully online)  
Interdisciplinary Studies (BA & BS)  
Japanese Studies (BA)  
Journalism (BA)  
Latin American Studies (BA)  
Linguistics (BA)  
Mathematics (BA & BS)  
Medieval & Renaissance Studies (BA)\*  
Music (BA)  
Philosophy (BA)  
Physics (BS)  
Political Science (BA)  
    *Concentrations in:*  
    American Politics  
    Global Politics  
    Political Theory  
    Public Law  
Psychology (BA)  
Public Health (BS)\*  
Public Policy (BA)  
    *Concentrations in:*  
    Environmental Policy  
    Gender, Race, and Society  
    Human Services: Health, Education and Labor  
    Law and Civil Rights  
    Local Government  
    Philosophy and Ethics  
    Politics  
    Quantitative Tools  
    Regulation and Public Finance  
    Technology and Policy  
    Urban Issues  
    World Affairs  
Religious Studies (BA)\*  
Social Welfare (BS)  
Sociology (BA)  
Spanish (BA)  
    *Concentrations in:*  
    Hispanic Literatures and Cultures  
    Spanish Language, Linguistics, Teaching  
Theatre (BA)  
Urban Studies & Planning (BA)  
Women's, Gender & Sexuality Studies (BA)

\*Interdisciplinary Studies concentration



# GRADUATE DEGREE PROGRAMS

## College of Arts and Sciences

Africana Studies (MA)  
Anthropology (MA, PhD)  
Art- Studio Art (MA, MFA)  
Atmospheric Science (MS, PhD)  
Behavioral Neuroscience (PhD)  
Biodiversity, Conservation, and Policy (MS)  
Biology (MS, PhD)  
Biology-Forensic (MS)  
Chemistry (MS, PhD)  
Chemistry- Applied (MS)  
Communication (MA, PhD)  
Communication/TESOL (non-certification) (MA, MS)  
Economics (MA, PhD)  
Economic Forecasting (CGS)  
English (MA, PhD)  
English/Information Science Dual Degree (MA, MS)  
Geographic Information Systems (CGS)  
Geography and Planning (MA)  
History (MA, PhD)  
History- Public (MA)  
History/ Information Science Dual Degree (MA, MS)  
Latin American, Caribbean and US Latino Studies (CGS, MA, PhD)  
Liberal Studies (MA)  
Mathematics (MA, PhD)  
Philosophy (MA, PhD)  
Philosophy PhD with MS in Bioethics Dual Degree (PhD/MS)  
Physics (MS, PhD)  
Professional Science Management (AGC)  
Psychology- Autism (CGS)  
Psychology- Industrial-Organizational (MA, PhD)  
Psychology-Clinical (PhD)  
Psychology-Cognitive/Developmental (PhD)  
Psychology-Social/Personality (PhD)  
Regional Planning (MRP)  
Regional Planning MRP with Albany Law JD (MRP/JD)  
Social Studies (MA)  
Sociology (MA, PhD)  
Sociology PhD with Women's, Gender, and Sexuality Studies (PhD/MA)  
Sociology-Demography (CGS)  
Spanish (MA, PhD)  
Spanish-Latin American and Caribbean Studies Concentration (MA)  
Urban Policy (CGS)  
Women's, Gender, and Sexuality Studies (MA)  
Women's, Gender, and Sexuality Studies MA with Sociology PhD (MA/PhD)

Women and Public Policy (CGS)

## School of Business

Accounting-2 year program (MS)  
Master's in Business Administration (MBA)  
Forensic Accounting (MS)  
Information Security (CGS)  
Professional Accountancy (MS)  
Taxation (MS)  
Tax Practice (MS)

## College of Engineering and Applied Sciences

Computer Science (MS, PhD)  
Information Science (MS, CAS, PhD)  
Professional Science Management (AGC)  
English MA/Information Science MS Dual Degree (MA/MS)  
History MA/Information Science MS Dual Degree (MA/MS)

## College of Emergency Preparedness, Homeland Security and Cybersecurity (CGS)

## School of Criminal Justice

Criminal Justice (MA, PhD)  
Dual Degree with Social Welfare (MA, MSW)

## School of Education

Childhood Education (MS)  
Counseling Psychology (PhD)  
Curriculum and Instruction (CAS)  
Curriculum-Online Teaching and Learning (CSG)  
Curriculum Development and Instructional Technology (MS)  
Curriculum and Instruction (PhD)  
Education Policy and Leadership (MS)  
Educational Research (CAS)  
Educational Psychology and Methodology (MS, PhD)  
English as a Foreign Language (CGS)  
General Educational Studies (MS)  
Mental Health Counseling (MS)  
Teaching English to Speakers of Other Languages MS (certification)  
Teaching English to Speakers of Other Languages MS (non-certification), AGC, MS (non-certification)/ Communication MA  
TESOL (Non-Certification) with Communication MA (MS/MA)  
Reading (MS)

## Rockefeller College of Public Affairs & Policy

International Affairs (MIA)  
International Health and Human Rights (CGS)  
Non-Profit Management and Leadership (CGS)  
Planning and Policy Analysis (CAS)  
Political Science (MA, PhD)  
Public Administration and Policy (MPA, PhD)  
Public Administration Dual Degree with Albany Law (MPA/JD)  
Public Sector Management (CGS)  
Women and Public Policy (CGS)

## School of Public Health

Biomedical Sciences (MS, PhD)  
Biometry and Statistics (MS, PhD)  
Environmental Health (MS, PhD)  
Epidemiology (MS, PhD)  
Global Health Studies (CGS)  
Health Disparities (CGS)  
Public Health (MPH, DrPH)  
Public Health MPH with Albany Med MD (MPH/MD)  
Public Health MPH with Social Welfare MSW (MPH/MSW)  
Public Health Fundamentals (CGS)  
Public Health Surveillance and Preparedness (CGS)

## School of Social Welfare

Social Work (MSW, PhD)  
Social Work MSW with Criminal Justice (MA/MSW)  
Social Work MSW with Albany Law (MSW/JD)  
Social Work MSW with Public Health (MSW/MPH)  
Social Work MSW with Social Welfare PhD Combined Program (MSW/PhD)

*AGC=Advanced Graduate Certificate; BA=Bachelor of Arts; BS=Bachelor of Science; CAS=Certificate of Advanced Study; CGS=Certificate of Graduate Study; DrPH=Doctor of Public Health; JD=Juris Doctor; MA=Master of Arts; MD=Medical Doctor; MFA=Master of Fine Arts; MIA=Master of International Affairs; MPA=Master of Public Affairs; MPH=Master of Public Health; MRP=Master of Regional Planning; MS=Master of Science; MSW=Master of Social Work; PhD=Doctor of Philosophy; PsyD=Doctor of Psychology*



## CONDITIONAL ADMISSION AT UNIVERSITY AT ALBANY

The University at Albany offers conditional undergraduate admission to applicants who meet the academic requirements but not the English proficiency requirement.

Through conditional admissions, students who complete level Advanced 2 of the Intensive English Language Program (IELP) at University at Albany will be able to meet the English proficiency requirement. Students who successfully complete the IELP will receive a TOEFL/IELTS waiver.



1. Apply to both University at Albany and the Intensive English Language Program (IELP). Each of our 7 levels take 8 weeks to complete. You will be placed in an appropriate language level after taking a placement test.
2. Successfully complete the highest level in the IELP.
3. Earn a minimum grade of B- in all classes.

### CONDITIONAL BRIDGE ADMISSIONS (JUST ONE SEMESTER OF ENGLISH)

1. Students who submit a TOEFL or IELTS test score to International Admissions between 61–69 iBT or a 5.5 IELTS score prior to arrival, will automatically be placed in level Advanced 1 in the IELP.
2. The Advanced 1 and Advanced 2 levels each take 8 weeks to complete.
3. Students who successfully complete the Advanced 2 level can begin academic studies.

### APPLY TO THE INTENSIVE ENGLISH LANGUAGE PROGRAM

1. Visit [www.albany.edu/ielp/apply.php](http://www.albany.edu/ielp/apply.php).
2. Complete and submit the application.
3. Send an original bank statement showing you have enough funds to pay all your expenses.
4. Send a photo or scan of the first page of your passport.



### HELPING INTERNATIONAL STUDENTS

IELP faculty and staff are committed to helping students meet their English language goals, experience American culture and campus life, and prepare for academic study.



# INTERNATIONAL STUDENT AND SCHOLAR SERVICES

International Student and Scholar Services (ISSS) at the University at Albany provides leadership in international education and intercultural learning through services and programs for 1,800 international students, their dependents, and the campus and surrounding communities. The ISSS office and its staff of five professionals and three graduate assistants are proud to serve our international students in a number of different ways, some of which are highlighted:

- Walk-in Advising and Support, Including the Important Aspects of Maintaining Your Immigration/Visa Status
- Online Pre-departure and Campus Orientations
- Freshman Success Program
- The International Friendship Partners Program
- Ongoing Workshops Related to Internships, Travel, and Pre- and Post-graduation Employment
- Cultural Events such as International Education Week and the International Fair, Trips to New York City and Boston, and a Traditional Thanksgiving Dinner
- International Graduation Celebration
- Collaborative Academic Support such as Online and In-person Tutoring Offered by Advising Plus and the Student Success Center

Through these and other services and programs provided each year, ISSS is invested in your success as an international student. We look forward to welcoming and serving you as a UAlbany student sometime in the near future.



## VISITING NON-DEGREE PROGRAMS

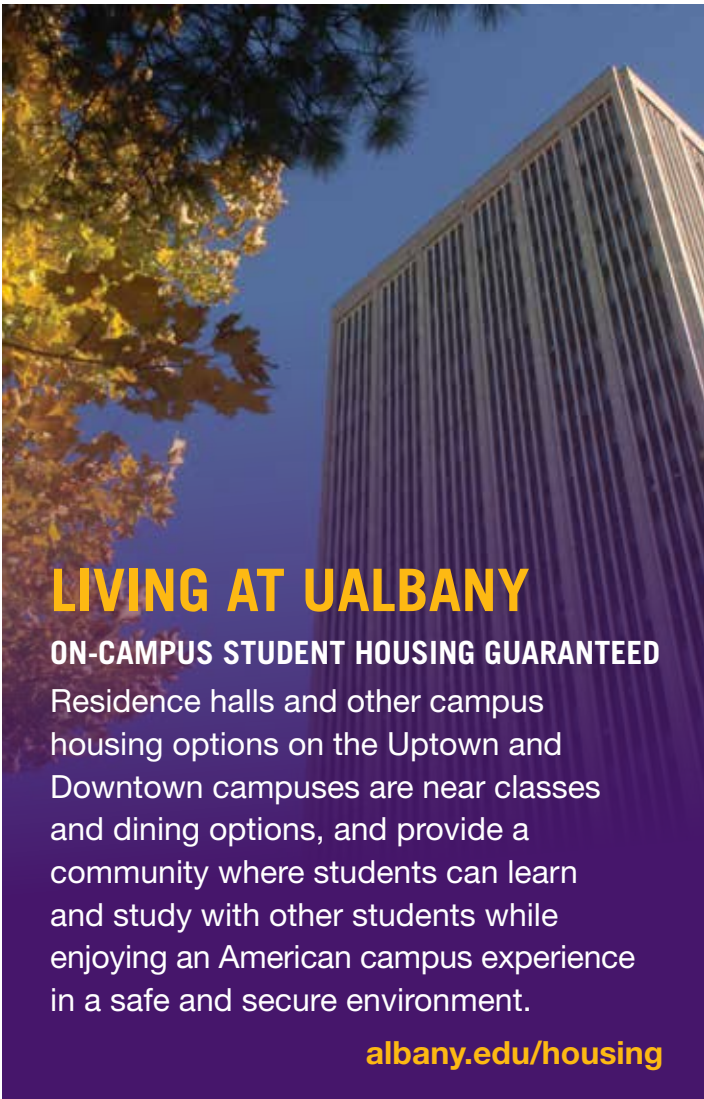
The University at Albany also welcomes visiting undergraduate and graduate students for a semester or academic year study abroad experience. Courses are available in all disciplines, with limitations in the School of Business.

### Eligibility:

- GPA 2.5 minimum
- English language score-70 TOEFL or 6.0 IELTS

To find out more information or to apply, please visit [www.albany.edu/studyabroad](http://www.albany.edu/studyabroad)





## LIVING AT UALBANY

### ON-CAMPUS STUDENT HOUSING GUARANTEED

Residence halls and other campus housing options on the Uptown and Downtown campuses are near classes and dining options, and provide a community where students can learn and study with other students while enjoying an American campus experience in a safe and secure environment.

[albany.edu/housing](http://albany.edu/housing)



## EXPLORE UALBANY

UAlbany has more than 200 student clubs and organizations. Cheer UAlbany to victory in basketball, football, baseball and many other spectator sports. UAlbany has a wide variety of cultural, musical and artistic events. Some examples are:

- Chinese Student Association
- International Korean Association
- Indian Student Association
- International Organization for Global Education
- Toastmasters UAlbany
- UAlbany Debate Team
- UAlbany Stock Exchange
- and many more!



## APARTMENTS AND HOMESTAYS

Students may choose to live in off-campus apartments. Through Homestays, students can improve their English and experience real American family home life and culture.

[albany.edu/livingoffcampus](http://albany.edu/livingoffcampus)  
[azhomestay.com](http://azhomestay.com)





## FROM BUSINESS TO BIOLOGY AND EVERYTHING IN BETWEEN

As a major public research university, the possibilities are virtually endless: Nine schools and colleges offer majors in more than 50 fields and minors in over 60. You can also design your own “interdisciplinary” major. Graduate programs in all these fields, as well as education, enrich your academic and research options and also offer accelerated paths to advanced study.



## TOP-NOTCH ACADEMIC FACILITIES

The 3 University Libraries have more than two million volumes and are among the nation’s top research libraries. We have wonderful on-campus venues for music, dance, and theatre, and state-of-the-art facilities in our Life Sciences Research Building, Cancer Research Center, and new \$64 million Massry Center for Business.

## ALBANY LAW-UALBANY AFFILIATION

Albany Law School and the University at Albany work together to combine programs and activities to benefit students from both schools. This collaboration, which includes a Cross-Campus Course agreement, allows the law school and its students to draw on the strength of a major research university.

- 3+3 Accelerated Program – BA/BS+JD (six years)

### COLLABORATIVE DEGREE DISCIPLINES

JD and 6 University at Albany Graduate degrees –

- JD and Master in Business Administration (MBA)
- JD and Master in Public Administration and Policy (MPA)
- JD and Master in Social Work (MSW)
- JD and Master in Regional Planning (MRP)
- JD and Master of Arts in History
- JD and Master of Arts in Criminal Justice
- Master of Science in Legal Studies Specialization in Cybersecurity and Data Privacy





## IDEAL LOCATION: THE STATE OF NEW YORK

New York is world-famous for culture, the arts, media, business, history, entertainment, fashion, international diplomacy, theater and world-class universities. Our campus is within reach of exceptional skiing, snowboarding and hiking in the Adirondacks, Catskills and Berkshires. Many landmarks are well-known and New York hosts several of the world's ten most-visited tourist attractions: Niagara Falls, Central Park, Times Square and Grand Central Station. Visiting the Statue of Liberty and Wall Street are other must-do experiences!



# IN THE HEART OF THE STATE CAPITAL

We are located in the heart of New York's Capital Region, home to 20 universities and colleges, 65,000 students, and nearly 800,000 people. Our campus is in the center of New York's fast-growing TechValley, a hotbed of Research and Development, business and entrepreneurial activity.



## APPLY NOW

For more information on how to apply, visit [albany.edu/international-admissions](http://albany.edu/international-admissions)

# UNIVERSITY AT ALBANY

State University of New York

## **UNIVERSITY AT ALBANY OFFICE OF INTERNATIONAL ADMISSIONS AND RECRUITMENT**

Science Library G40  
1400 Washington Ave.  
Albany, NY 12222 USA

PH: +1 (518) 591-8172

FAX: +1 (518) 591-8171

[uginternational@albany.edu](mailto:uginternational@albany.edu)

[albany.edu/international-admissions](http://albany.edu/international-admissions)

---

## **UNIVERSITY AT ALBANY OFFICE OF GRADUATE ADMISSIONS**

UAB 121  
1215 Western Ave.  
Albany, NY 12222 USA

PH: +1 (518) 442-3980

FAX: +1 (518) 442-3922

[graduate@albany.edu](mailto:graduate@albany.edu)

[albany.edu/graduate](http://albany.edu/graduate)

---

## **UNIVERSITY AT ALBANY INTENSIVE ENGLISH LANGUAGE PROGRAM**

Science Library G40  
1400 Washington Ave.  
Albany, NY 12222 USA

PH: +1 (518) 591-8172

FAX: +1 (518) 591-8171

[IELP@albany.edu](mailto:IELP@albany.edu)

[albany.edu/ielp](http://albany.edu/ielp)

---

## **SCHOOL CODES FOR STANDARDIZED TESTS**

ACT: 2926

SAT, TOEFL and GRE: 2532